

Pandemic Prevention

Measures to reduce the risk of outbreaks in animal populations and prevent spillover of pathogens between animals and humans

Tackling anthropogenic drivers of pandemics and root causes:



Factory farming



Wildlife trade



Live animal markets



Fur farming



Habitat encroachment and land use change for animal feed and livestock



Deforestation & biodiversity loss



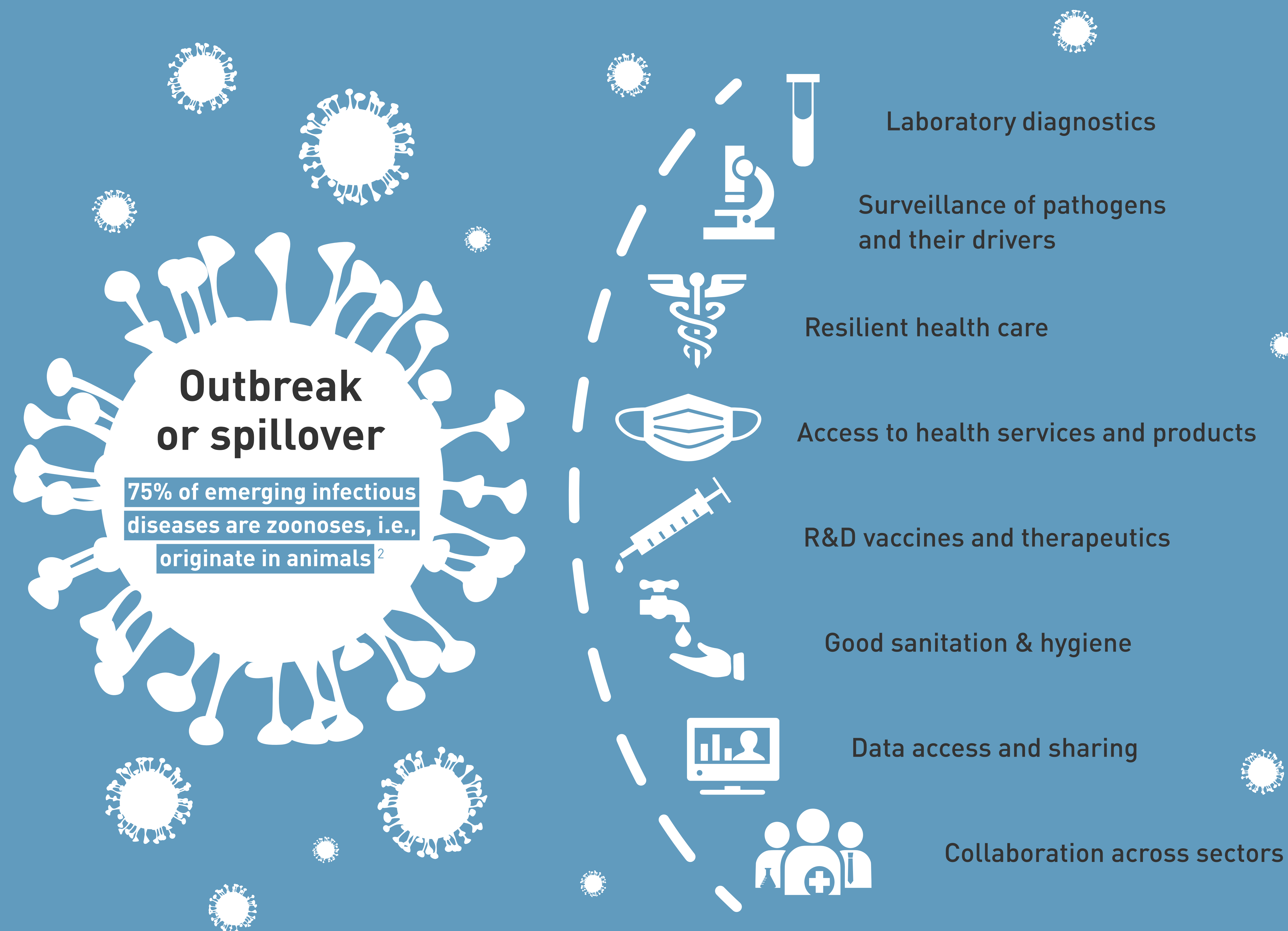
Climate change

Factors that can trigger pathogen emergence, spread and mutation:

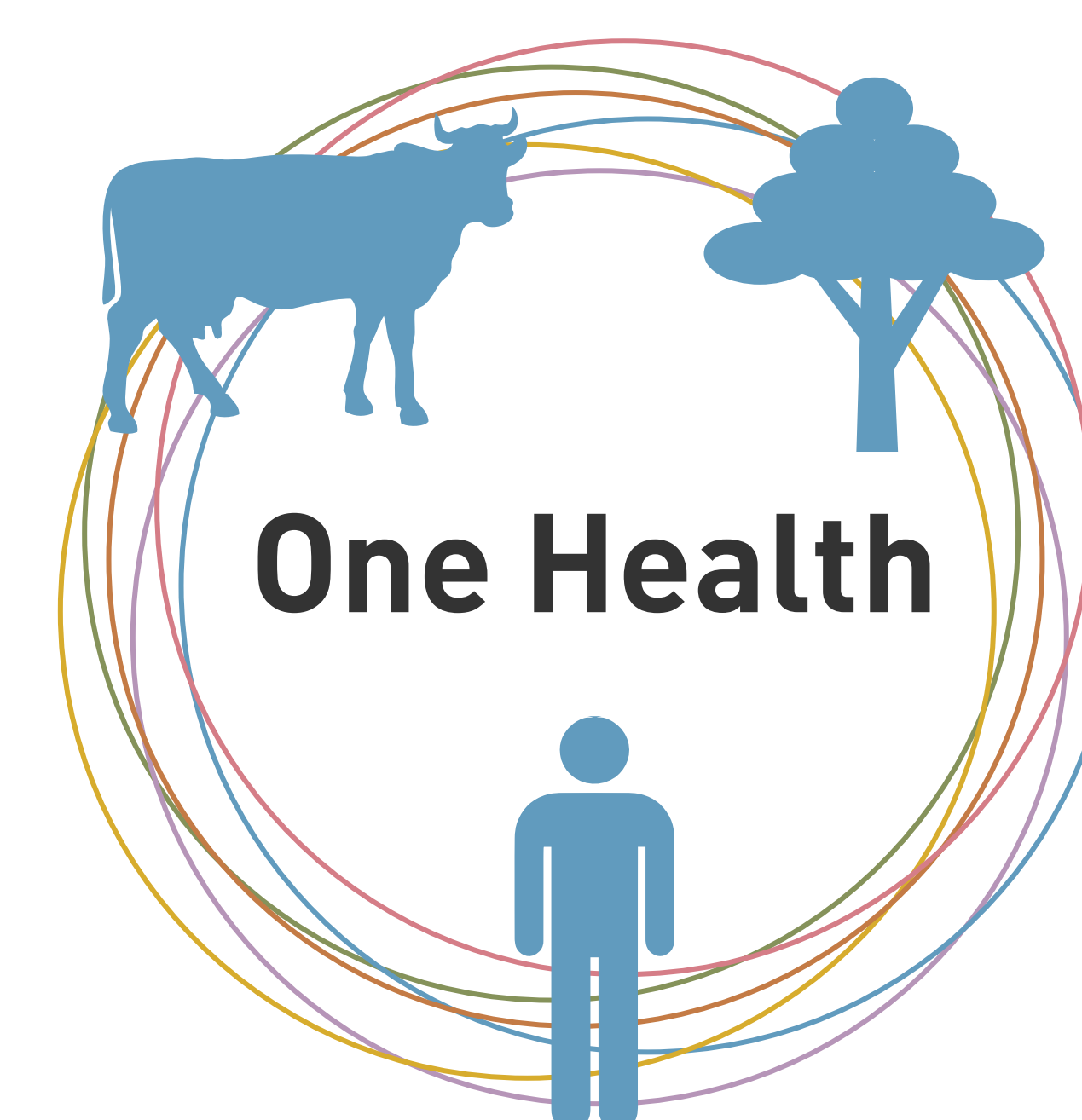
- a high number of animals kept, traded, transported and slaughtered
- cramped and overcrowded environments
- poor hygiene
- conditions suppressing immune systems and encouraging pathogen excretion and uptake

Preparedness & Response¹

Measures to prepare for and contain disease outbreaks



Preventing spillover of pathogens by improving animal welfare and protecting the environment, saves lives, avoids suffering & negative social impacts and costs a fraction of preparedness and response!



A **holistic** collaborative **One Health** **approach** to tackling pandemics requires measures that **strengthen prevention as well as preparedness and response.**